



INDOFINE Chemical Company, Inc.

121 Stryker Lane, Bldg. 30, Suite 1 • Hillsborough, NJ 08844 • U.S.A.

Phone: (908) 359-6778 • FAX: (908) 359-1179

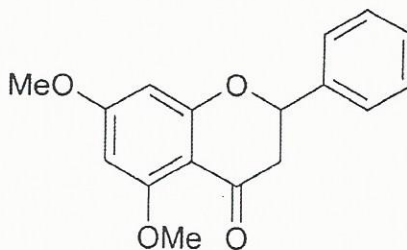
website: www.indofinechemical.com

e-mail: chemical@indofinechemical.com

CERTIFICATE OF ANALYSIS

Cat. No.: D-202

<u>Product:</u>	5,7-DIMETHOXYFLAVANONE
<u>CAS Number:</u>	[1036-72-2]
<u>Lot No.:</u>	0312205
<u>Molecular Formula:</u>	C ₁₇ H ₁₆ O ₄
<u>Molecular Weight:</u>	284.32
<u>Melting Point:</u>	143-145°C
<u>Appearance:</u>	White powder
<u>TLC:</u>	Chloroform : methanol (9:1)
<u>Solubility:</u>	Soluble in Chloroform
<u>Purity(HPLC):</u>	99.48%





INDOFINE Chemical Company, Inc.

121 Stryker Lane, Bldg. 30, Suite 1 • Hillsborough, NJ 08844 • U.S.A.

Phone: (908) 359-6778 • FAX: (908) 359-1179

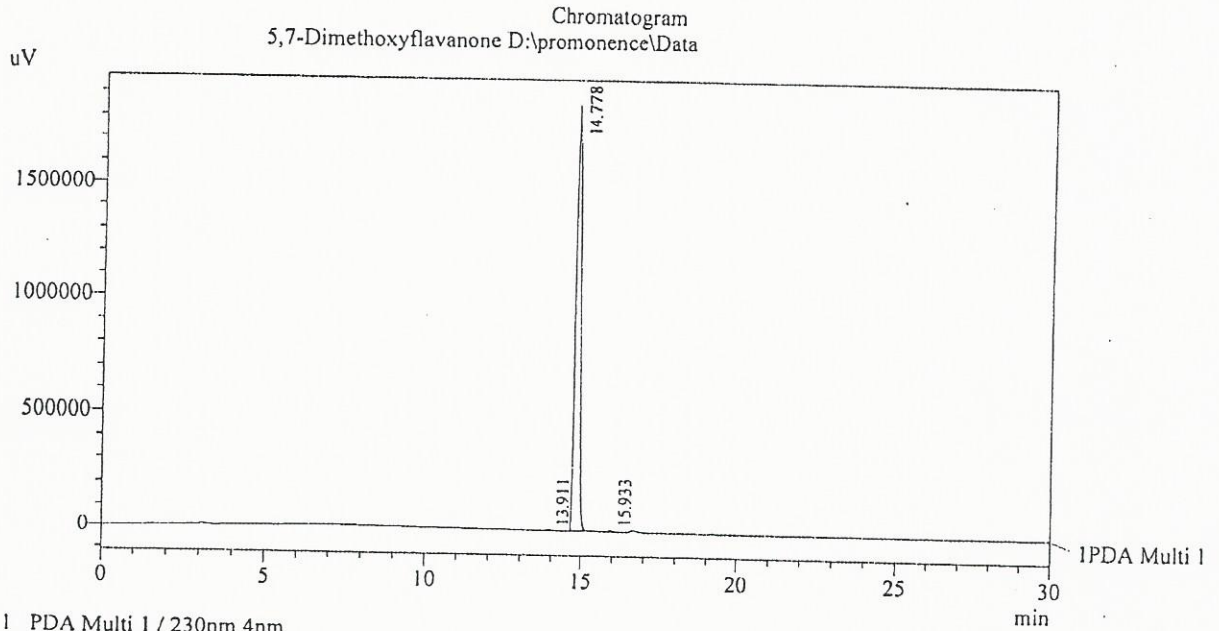
website: www.indofinechemical.com

e-mail: chemical@indofinechemical.com

HPLC ANALYSIS

Acquired by	: Sanjeev	Catalog No.:	D-202
Sample Name	: 5,7-Dimethoxyflavanone	Product name:	5,7-Dimethoxyflavanone
Sample ID	: Lot No:- 0312205	Lot No.:	0312205
Injection Volume	: 20 uL		
Data Filename	: 170112C.lcd		
Method Filename	: Linear Gradient.M.lcm		

Column	: LUNA C-18(2), (250mm x4.6mm 5.0μ)
Flow	: 1.000 mL/min.
Mobile Phase	: A(0.05% TFA in water) B(Acetonitrile)
	0.01 90 10
	12.0 10 90
	25.0 10 90
	28.0 90 10
	30.0 90 10



PeakTable

PDA Ch1 230nm 4nm

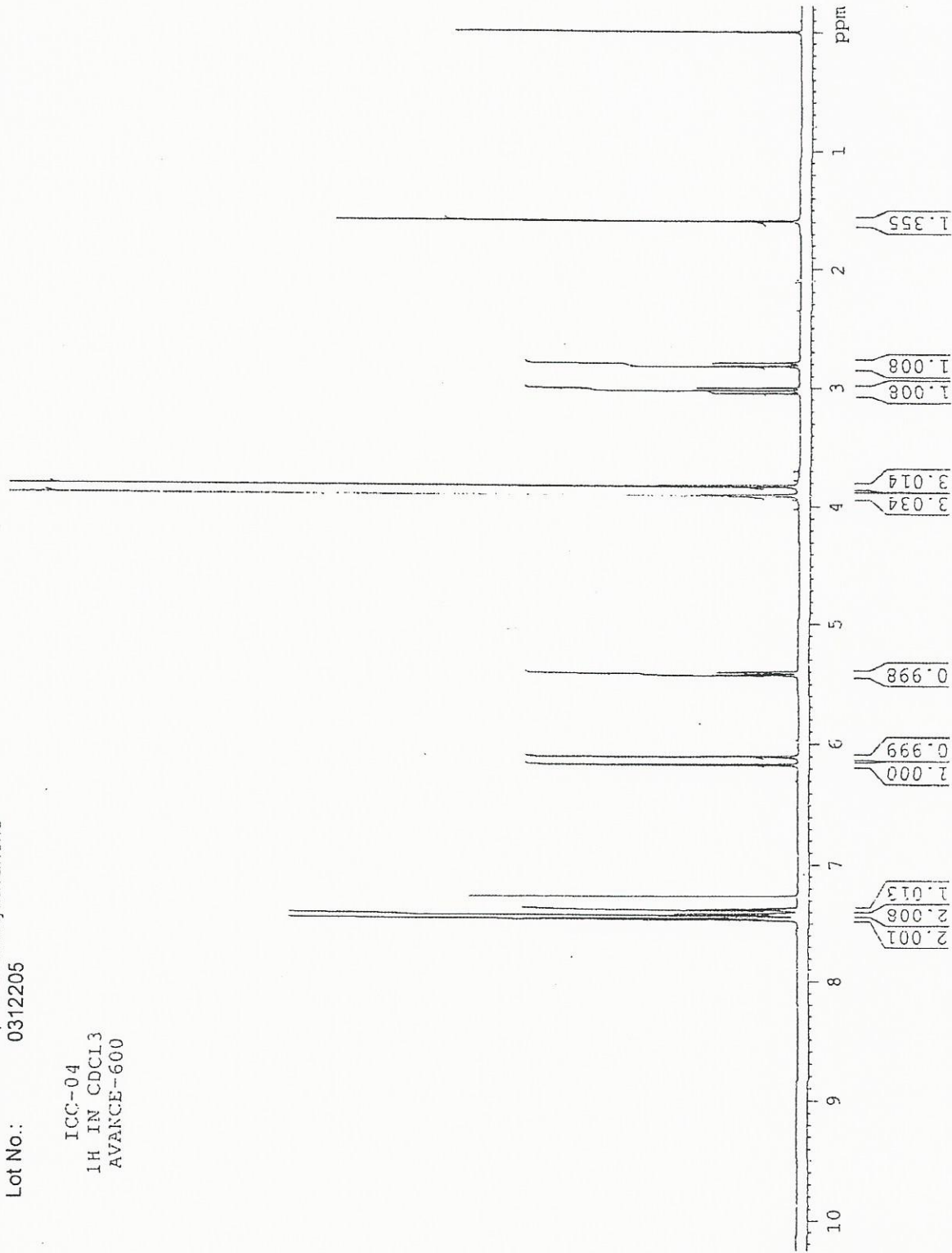
Peak#	Name	Ret. Time	Area	Area %	Relative Retention Time
1	RT:13.911	13.911	47737	0.22	0.94
2	RT:14.778	14.778	21590554	99.48	1.00
3	RT:15.933	15.933	65051	0.30	1.08
Total			21703343	100.00	



INDOFINE Chemical Company, Inc.
121 STRYKER LANE
BLDG. 30, SUITE 1
HILLSBOROUGH, NJ 08844

Catalog No.: D-202
Product name: 5,7-Dimethoxyflavanone
Lot No.: 0312205

ICC-04
1H IN CDCl3
AVANCE-600



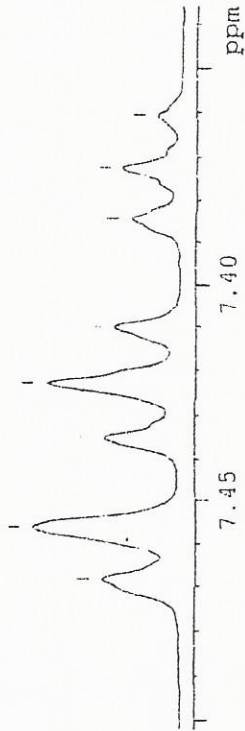


INDOFINE Chemical Company, Inc.
121 STRYKER LANE
BLDG. 30, SUITE 1
HILLSBOROUGH, NJ 08844

Catalog No.: D-202
Product name: 5,7-Dimethoxyflavanone
Lot No.: 0312205

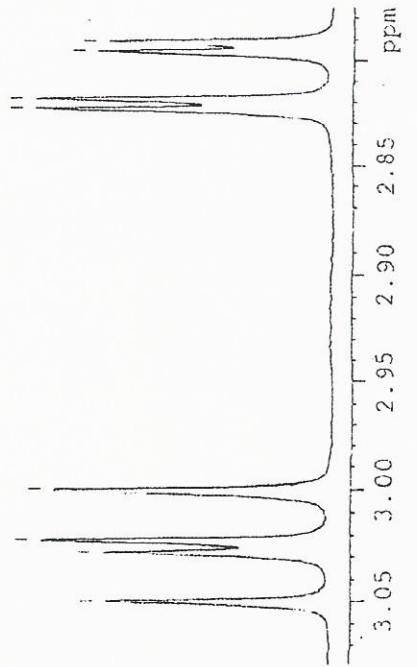
ICC-04
1H IN CDCL3
AVANCE-600

7.469
7.457
7.435
7.423
7.410
7.385
7.372
7.361



3.051
3.029
3.023
3.001

2.824
2.819
2.797
2.792



5.430
5.425
5.408
5.403

6.168
6.164

6.103
6.099

